

# MONTHLY MEMBERSHIP PROGRESS REPORT

District 202 E

Results as of: 1/31/2024

GMT:

LOCATION NEW ZEALAND

GMT CA

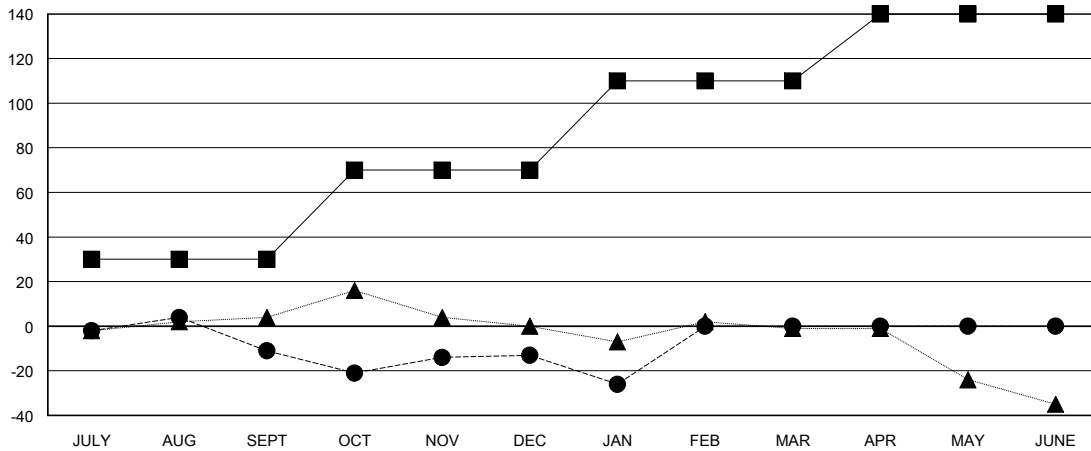
Clubs			
RESULTS FOR 2023-2024			
QUARTER	NEW CLUB GOAL	NEW CLUBS	DROPPED CLUBS
JULY/AUG/SEPT	0	0	0
OCT/NOV/DEC	1	0	0
JAN/FEB/MAR	0	0	0
APR/MAY/JUNE	0	0	0

Members			
RESULTS FOR 2023-2024			
QUARTER	MEMBER GROWTH NET GOAL	MEMBER GROWTH ACTUAL	DROPPED MEMBERS ACTUAL (including transfers)
JULY/AUG/SEPT	30	42	44
OCT/NOV/DEC	40	25	21
JAN/FEB/MAR	40	3	15
APR/MAY/JUNE	30	0	0

GOALS AND ACTUAL NEW CLUBS CUMULATIVE



GOALS AND ACTUAL MEMBERS CUMULATIVE



DROPPED CLUBS: 0	24 CLUBS OF 42 ADDED 1 OR MORE NEW MEMBERS	<u>GENDER DISTRIBUTION</u>	
		MALE	803 (70.07%)
		FEMALE	343 (29.93%)
<u>DROPPED MEMBERS</u>		TOTAL FAMILY UNIT MEMBERS 66	
DECEASED	11	FAMILY MEMBERS PAYING HALF DUES 33	
CLUB CANCELLED	0		
OTHER	69		
TOTAL	80		

[CLICK HERE FOR CUMULATIVE MEMBERSHIP DATA](#)